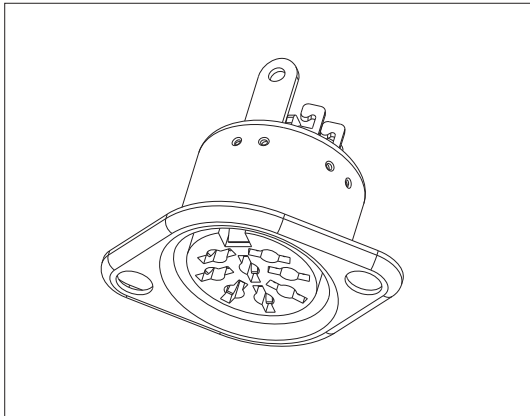
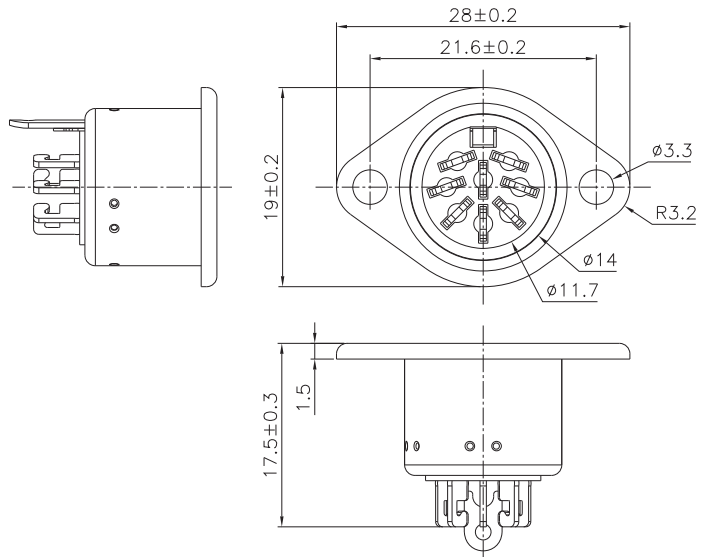


C1C0S2 SERIES

DIN CONNECTOR, PANEL MOUNT



Dimensions



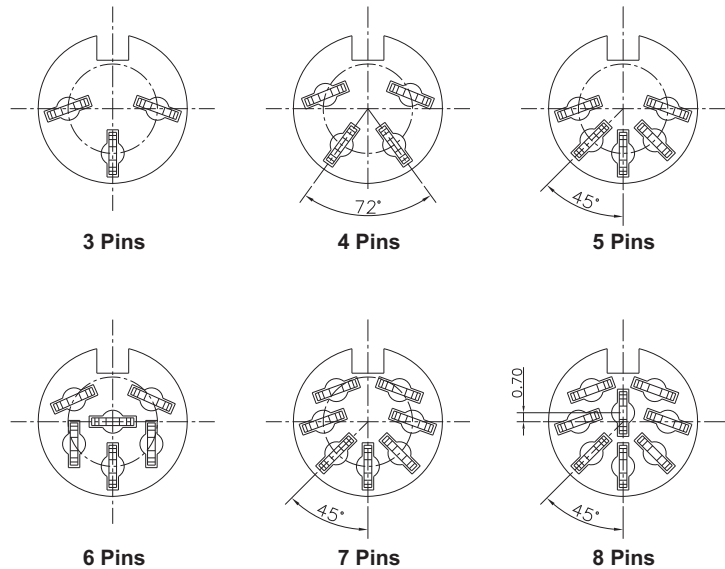
Materials and Finish

Housing:
Engineering thermoplastic, UL 94V-0
Contacts:
Brass
Ground Terminal:
Phosphor Bronze
Shell:
Cold Rolled Steel

Electrical Characteristics

Contact Current Rating:
AC 100V 2A Max.
Contact Resistance:
30 milliohms Max.
Dielectric Withstanding Voltage:
500 VAC Max. for 1 minute
Insulation Resistance:
100 megohms Min.
Operating Temperature:
 $-25^{\circ}\text{C} \sim +70^{\circ}\text{C}$
Insertion Force:
1.0Kgf ~5.0Kgf
Withdrawal Force:
1.0Kgf ~5.0Kgf
Durability:
5000 Cycles

Pin Assignments (Front View)



C 1 C 0 S 2 - X X X E - R

① DIN Series

② No. of Contacts
3~8 Pins

③ Options
Options for housing color, housing material,
grounding style, shield style, shield plating,
and other customers' requirement.

④ Contact Plating
A: Tin (Sn)
E: Silver (Ag)

① Model

Ordering Information